



PASTRY PERFECTION

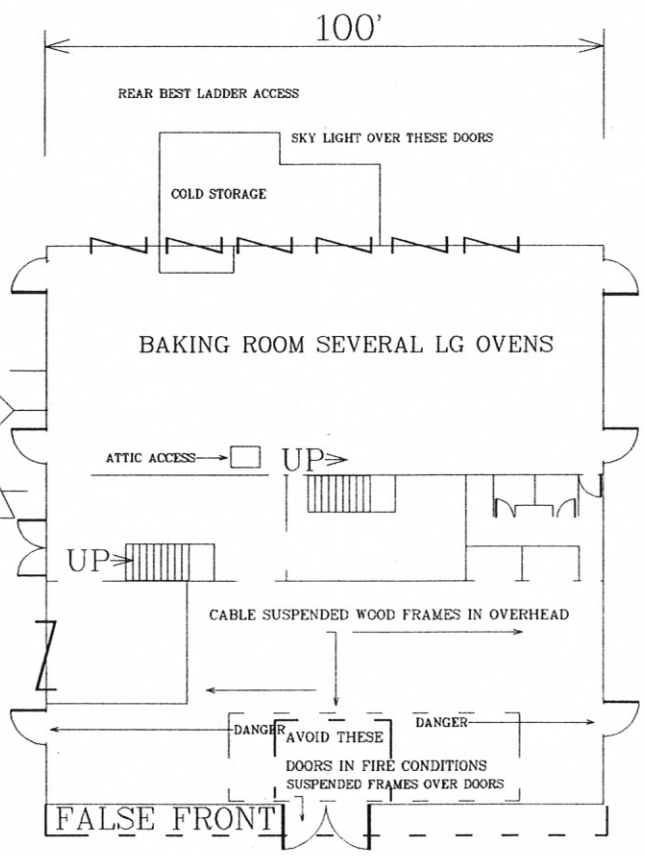
5855 GLENWOOD

SYMBOLS

ELECTRICAL MAIN

GAS METER

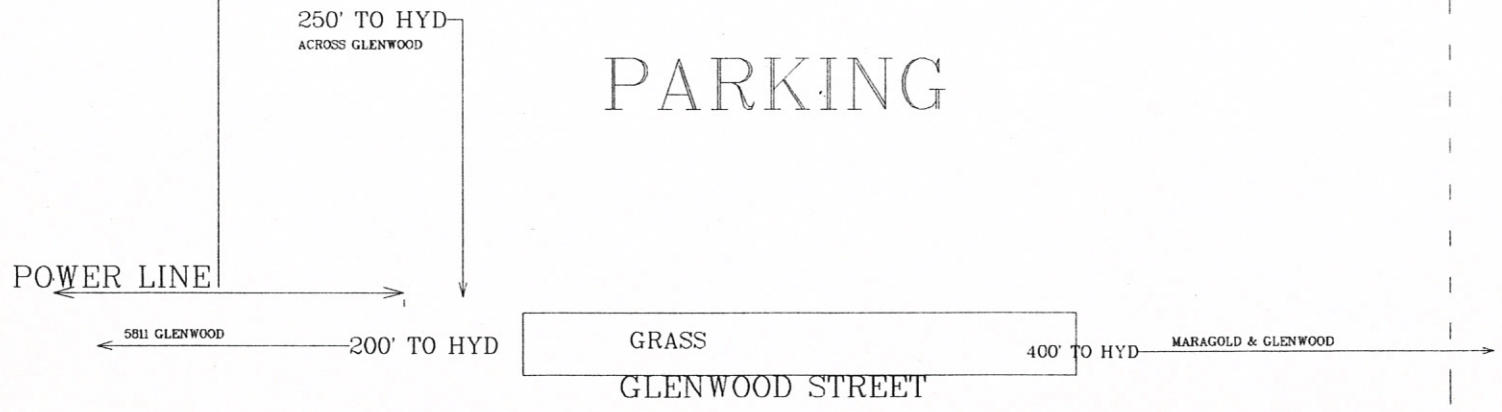
The diagram shows a diamond shape with the letter 'E' inside, representing an electrical main, and a triangle shape with the letter 'G' inside, representing a gas meter. Both symbols are connected to horizontal lines representing pipes or conduits.



100'

FENCE

PARKING



PASTRY PERFECTION

5855 GLENWOOD

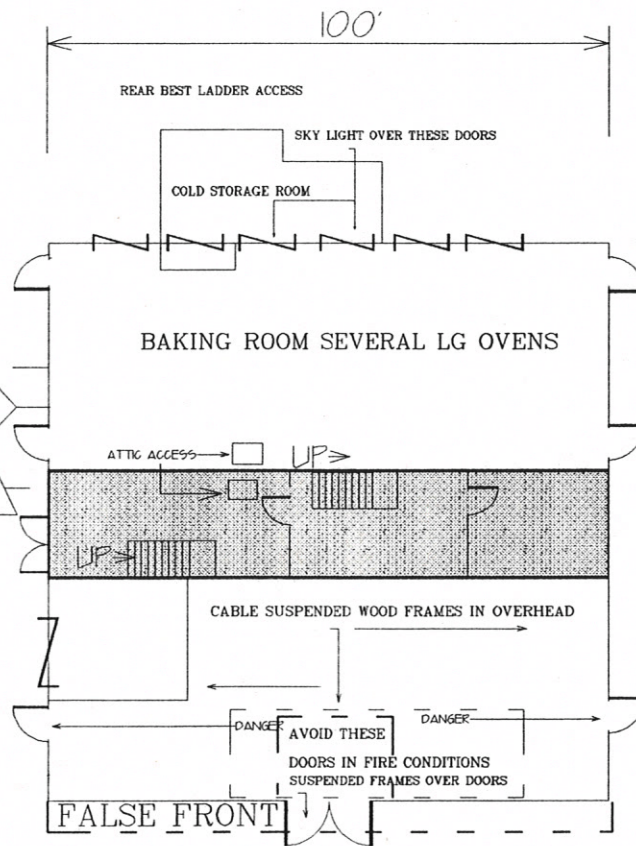
2ND LEVEL IN SHADED AREA ONLY

SYMBOLS

ELECTRICAL MAIN

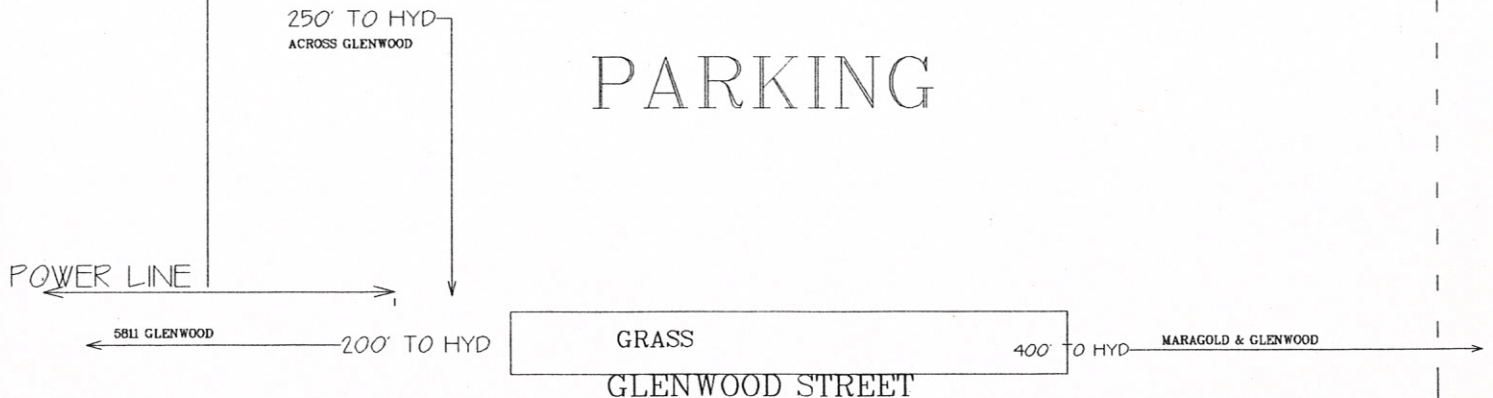


GAS METER



FENCE

PARKING



QUICK ACCESS PRE-PLAN FORM

NORTH ADA COUNTY FIRE/RESCUE

ADDRESS 5855 Glenwood PASTRY PERFECTION

DESCRIPTION OF BUILDING bakery with retail sales
2nd story mezzanine

GPM'S 25% 825 50% 1605 75% 2475 100% 3300
PERCENT INVOLVED

STRATEGY SMALL FIRES - quick attack with primary search
LARGE FIRES - defensive

FIRE BEHAVIOR

PREDICTION rapid spread not likely, low fuels on main floor
If fire in office: fire could get into attic area, lightweight
flat wood truss roof

PROBLEMS rear garage doors may be blocked
FIRE FIGHTING poor attic access - see plot plan

HAZARDS

TO PERSONNEL FALSE FRONT overhang in front of building, also
suspended wooden frames inside of front door & first side doors;
heavy power lines on side 2 (SEE PLOT PLAN)

HYDRANT LOCATIONS

1. 5811 Glenwood
2. Glenwood & Marigold NW corner
3. 5800 Glenwood (North side)

STANDPIPE YES NO X SPRINKLER YES NO X